



THE MARYLANDER

AAUW Maryland Newsletter

AAUW's Mission

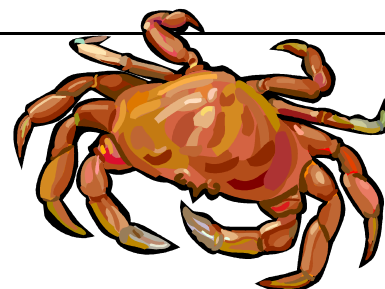
Advancing equity for women and girls through advocacy, education, and research.

VOLUME 79, No. 3

<http://www.aauwmd.org>

WINTER 2011-2012

AAUW Maryland Winter Conference: “We’re Crabby” Ellicott City, Maryland January 28, 2012



For our first meeting of the New Year, we will again get together for great food and camaraderie before considering with our guest speaker new approaches to the thorny problem of membership retention. We will then move on to our winter board meeting.

We get many women, and--once in a while--men, to join us to promote equity for women and girls through advocacy, education, philanthropy and research. However, the “getting” is only half the job. The other half is retaining those members. Not retaining many is getting us crabby, but Claudia Richards, the Association’s Senior Manager of Branch Relations, will give us ideas to combat the decline in membership.

Claudia will speak to us after we enjoy a delicious lunch at, where else, the Crab Shanty, located in Ellicott City. The conference will be hosted by Howard County Branch. A sincere thank you to Kensington-Rockville branch for having hosted the Winter Conference for many years.

See the last page of the *Marylander* for directions to our meeting and to register for the luncheon. Please don’t forget to select your preferred entrée.

Of course, there will be a board meeting following Claudia’s talk, which will be open to anyone who would like to attend.

Editor’s note: The crab is still great, but our meeting venue has just decided that it should be less “Crabby” and has changed its name to **Shanty Grille**.

Agenda

11:30 am	Registration
11:45 am	Lunch
12:30 pm	Claudia Richards: Membership Retention
1:30 pm	AAUW Maryland Business Meeting
3:00 pm	Adjourn

Conference Speaker

Claudia Richards

Claudia Richards joined the staff of the AAUW Educational Foundation in March of 1992. Since then she has served in numerous capacities such as Development Officer for Volunteer Development and Relations, Event Planner, and now Senior Manager of Branch Relations. Claudia works with AAUW branch and state leaders to provide them with resources to promote the AAUW mission in their local communities.

Claudia has a deep appreciation for volunteerism as a long-time volunteer. Claudia has a broad array of volunteer experiences including: fundraising, event planning, and peer-to-peer training. Claudia is most proud of her experiences as a judge in an essay contest for D.C. Public Schools sponsored by the D.C. Department of Health, Child and Maternal Services Division and as a phone-a-thon fundraising volunteer for the D.C. Rape Crisis Center. Claudia's most memorable volunteer experiences have been as a peer trainer for the D.C. Women's Council on AIDS and a volunteer at Shaed Elementary School in Washington, D.C. The Council afforded her the opportunity to appear on 20/20 in 1993 with John Stossel as well as speaking to 250 students at Howard University. Claudia also volunteered her talents at Shaed Elementary School in many capacities, such as: designer for the first school brochure and volunteer committee member for the Community Day Carnival and their SAY Yes to Education Saturday School program for families at risk sponsored by Shell Oil.

Claudia is also a part-time student at the University of Maryland, completing her degree in Business Management and Marketing.

AAUW Maryland Counterparts Directory Available



AAUW Maryland
Counterparts Directory

2011 -2012

Final Draft, October

Now available: the AAUW Maryland Counterpart Directory, a handy guide to AAUW leaders in Maryland. The 20-page Directory contains contact information for AAUW Maryland officers and for their counterparts in AAUW branches in the state. The first copy of the Directory is \$10.00; additional copies are \$5.00. Proceeds, after expenses, will be donated to the Barbara Fetterhoff Fund.

To order, please provide your name, mailing address, branch name, the number of copies you require, along with a check made out to "AAUW Maryland" with "Directory" in the memo line. Mail your request to "AAUW MD Directory c/o Joyce Graf, 1368 Canterbury Way, Rockville, MD 20854." Printed copies will be available in mid-November.

Message from Joyce and Mary Anne



Joyce Graf and
Mary Anne Williams
Co-Presidents

At this harvest time of year, it seems appropriate to look at REAP, which is the AAUW mission statement “elevator speech.” AAUW promotes equity for women and girls through Research, Education, Advocacy and Philanthropy. Is your branch following a mission-based program to enable our mission?

Research – It may be difficult for individual branches to conduct and report on research. However, branches can access and use the research done by the Association. By going online, you can access Programs in a Box, material already prepared to help your branch present a program on an issue. It is also easy to access research reports by going online. If you are not able to use online resources, just call the AAUW office for a quick and helpful response. The Association is most interested in learning how they can help the branches, so let them know.

Education – Many branches interpret this as conducting public meetings about issues of concern to the local community, and they are right! We should also consider looking into our local school systems and determining the needs they have in helping girls fulfill their potential. Mentoring programs offered by many branches are enabling young girls and young women to achieve lofty goals. Many branches are coordinating with schools to present programs related to STEM careers. Is your county school system enabling high school girls to achieve at the same level as boys in

science, math and technology? Have you asked? You should!

Advocacy – Kay Wendowski is doing a fine job representing our state in policy and legislative issues in Annapolis, but she can always use our help. Perhaps your branch could sponsor a trip to Annapolis to meet with a local delegate on issues of concern. Or sponsor a meeting in your district to bring attention to these issues. Look at local government – are women fairly represented? Could your branch encourage more women to consider running for office, using ElectHer and other resources from the Association?

Philanthropy – This is the part with which most of our branches are doing extremely well! The Barbara Fetterhoff Fund reached its goal for its first year. We are now embarking on the second year; will we reach the goal again? In addition, the state board approved an initiative for this year that EVERY branch will be encouraged to fund a college scholarship for a woman, or to fund a scholarship for a woman to attend the National College Women Student Leaders Conference.

Mission-based programming is not new, but it can give new insights into how your branch operates. By putting the focus on accomplishing a goal, the branch has a purpose beyond monthly social meetings. AAUW still has much to do in its future, and we can all help.

AAUW Funds Update

Christine Schmitz

AAUW Funds Vice President

As we enter this season of giving we remember the phrase "it is better to give than to receive." Our AAUW Maryland members certainly live by this phrase, as is evident from our year to date giving to our various AAUW Funds. Thank you, thank you, thank you for all of your support!

Giving between 1/1/2011 through 9/30/2011 is as follows:

AAUW Funds	\$3,388.50
Educational Opportunities Fund	\$9,067.96
Legal Advocacy Fund	\$2,108.50
Public Policy	\$945.89
Eleanor Roosevelt Fund	\$440.00
Leadership Programs (which includes our Barbara Fetterhoff Honorary Fund)	\$18,194.50

Total Giving: \$34,145.35

I want to take this opportunity to remind all of you

that we continue to request and emphasize that funding go to the **BARBARA FETTERHOFF HONORARY FUND** (Fund #4355). This money will again go to support the upcoming 2012 National Conference for College Women Student Leaders (also known as NCCWSL). This is a fast-paced, two-and-a-half-day conference that addresses the needs of current and aspiring women student leaders. More than 500 students attended the Conference in 2011. Fifty-five of those women were able to attend because of scholarship funds raised by branches and states. Last year Maryland was fortunate to achieve its goal of being a sponsor of the Women of Distinction ceremony at this event. We would like to once again raise \$20,000 by April 1, 2012, to sponsor this event in 2012. Please make every effort to do what you can to make a contribution to this worthy cause.

Please contact me with any further questions about giving: Christine Schmitz, dialacpa@aol.com, 410-795-5091.

Patuxent River Branch Fundraiser



On October 23, 15 branch members and friends feasted on delicious potluck finger foods at the home of Anne Creveling and then moved to the Port Tobacco Playhouse in La Plata to enjoy the production "The Trip to Bountiful." The group was joined by AAUW Maryland co-president, Mary Anne Williams. A brief meeting was held and all present learned

more about upcoming programs and branch activities. Over \$150 was raised for the Dare to Dream Program. Shown (L-R): Back: Dr. Cynthia Shoemaker, Mary Anne Williams, Paula and Ernie Willingby. Front: Barbara Fetterhoff, Marie Andrews, her daughter Kathy Andrews, and Karen Hunt Barbara.

Membership Issues

Jennifer Ingram
Membership Vice President

Membership Changes!

As of January 1, 2012, national and state AAUW dues are half-price until March 15, 2012. This is because of the shortened period of membership, with the dues covering only through June 30, 2012. National dues will be \$24.50 and state dues will be \$5. The branch decides whether branch dues are half-price.

This has impact on dues at *Shape the Future*, which provides half-price membership for anyone who joins during an event to which the public is invited. National dues will be \$12.25 at a *Shape the Future* event until March 15. State dues will be \$5. Take full advantage of this double sale to recruit!

Remember, if you get at least two new members with a *Shape the Future* event, your branch earns a free membership, up to a maximum of three free memberships. This is one tool that AAUW Howard County has used successfully to increase the size of the branch so dramatically. And Anne Arundel reports they recruited four new members at one STF event.

If you have questions on Shape the Future, do not hesitate to get in touch with me at jenniferingram@comcast.net.

Recruiting Events

AAUW Maryland, with help from local branches exhibited at the Computer Mania event at the University of Maryland College Park and at the Power Conference and at the Women's Empowerment Conference. We successfully spread the word about AAUW to a wide, diverse audience and obtained information on several prospective members to share with the branches. We hope they become members! Thanks to all who helped!

If you know of events that span an audience greater than your branch's area, let me know and we will discuss possibly exhibiting there.

College/University Relations

Jennifer Ingram and Verna Kushel
C/U Relations Co-Chairs

I am slowly but surely working my way through contacting branches and colleges/universities to recruit e-student affiliates and AAUW partners. I would love to hear of your branch's C/U activities. I know that Patuxent River Branch met with the president of the College of Southern Maryland to discuss possible projects and a possible second C/U representative, which all partners can have.

Howard County met with Howard Community College to discuss the advantages of becoming a partner with AAUW and about possible projects,

like Start Smart. That is still a pending project. I would love to increase the number of AAUW C/U partners in Maryland, but I also want to increase the number of e-student affiliates in the state. I have been in touch with the University of Maryland College Park about sending a message through a listserv about AAUW, and they have recently done so.

What have you tried with your colleges/universities? Let's share some information and good ideas.

LAF Update

Janet Crampton
LAF Liaison

CASES

In September AAUW Legal Advocacy Fund awarded support to these cases, based on their current needs.

[Cioca v. Rumsfeld](#), Virginia, \$3,000

[Dukes v. Wal-Mart](#), \$6,000

[Jaurequito v. Feather River Community College, California](#), \$3,000

[Mansourian v. Regents of the University of California](#), \$6,000

[Sun v. University of Massachusetts, Dartmouth](#), \$6,000

[Thein v. Feather River Community College, California](#), \$3,000

[Wartluft v. Feather River Community College, California](#), \$3,000

Past LAF-supported cases with Internet links are listed at the AAUW web site, Legal Advocacy Fund, Case Support.

PROGRAM

AAUW was a co-sponsor of "Anita Hill 20 Years Later: Sex, Power, and Speaking Truth," a daylong summit and evening performance on workplace sexual harassment held on October 15, at Hunter

College in New York City. AAUW co-hosted a lunchtime discussion about sexual harassment in schools and on the streets. If you missed the conference, you can view it on C-Span's web site.

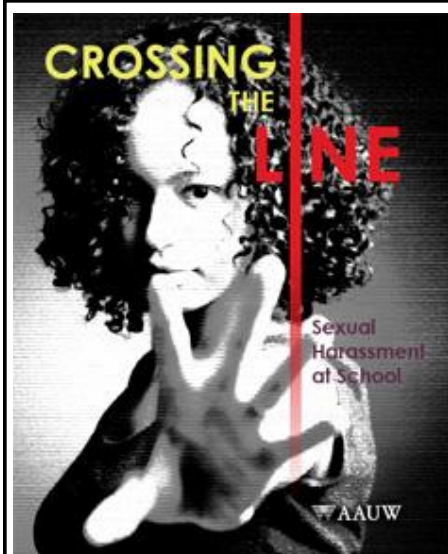
REPORT

Crossing the Line, AAUW's latest research report, released November 7, received wide media coverage (see AAUW web site for Internet links). Based on findings from a nationally representative survey conducted in May and June, 2011, this report presents the most comprehensive research to date on sexual harassment in grades 7-12 and reveals some sobering statistics about the prevalence of sexual harassment and the negative impact it has on students' education.

AAUW has been at the forefront of sexual harassment research for over a decade, including the 1993 *Hostile Hallways* survey and the 2001 follow-up report, *Hostile Hallways: Bullying Teasing and Sexual Harassment in School*.

CONTRIBUTE

The AAUW Legal Advocacy Fund (LAF) works to combat sex discrimination in higher education and the workplace. Gifts to LAF are tax deductible to the donor. LAF is AAUW Funds number 3999.



Read the Latest AAUW Report

- Download the full report or the Executive Survey by going to www.aauw.org and clicking on the link.
- Order a hard copy of the report at ShopAAUW.

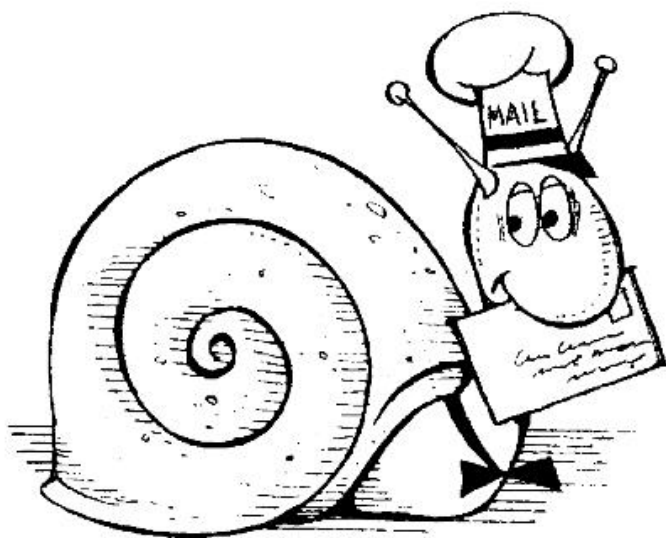
Sonia Kovalevsky Math Day

Sonia Kovalevsky (1850-1891) was the first major woman mathematician and the first woman to be appointed a full professor at a Northern European University. She also wrote non-fiction and worked for women's rights. Many universities and colleges, including Montgomery College with the support of the AAUW Montgomery County Interbranch, hold Sonia Kovalevsky Math Day. Your branch could team with a local university or college to do the same.

Through a grant from the National Science Foundation (NSF), the Association for Women in Mathematics expects to support Sonia Kovalevsky High School and Middle School Mathematics Days at colleges and universities throughout the country. Sonia Kovalevsky Days have been organized by AWM and institutions around the country since 1985. They consist of a program of workshops, talks, and problem-solving competitions for female high school or middle school students and their teachers, both women and men. The purposes are to encourage young women to continue their study of mathematics, to assist them with the sometimes difficult transitions between middle school and high school mathematics and between high school and college mathematics, to assist the teachers of women mathematics students, and to encourage colleges and universities to develop more extensive cooperation with middle schools and high schools in their area.

AWM awards grants ranging on average from \$1,500 to \$2,200 each (\$3,000 maximum) to universities and colleges. Historically Black colleges and universities are particularly encouraged to apply. Programs targeted toward inner city or rural high schools are especially welcome.

E-Mail or Snail-Mail?



Starting with this issue of the *Marylander*, e-mail will be the preferred distribution method.

Currently, 850 members receive the quarterly newsletter. The 632 members who have an active e-mail address on file with AAUW and have not asked specifically for a hard copy, are receiving the *Marylander* by e-mail.

If you are having problems with electronic delivery and wish to return to snail-mail, contact the editor at edieallison@comcast.net.

If you received a hard copy and would like to get the *Marylander* by e-mail, just go to the AAUW member center and update your e-mail address and the next issue will automatically come electronically.

As always, you can read the *Marylander* online at www.aauwmd.org.

**SAVE
THE
DATE**

Sunday, January 29, 2012

2012 WLB

Women's Legislative Briefing

FEATURING:

VIP Panel Discussion:
Women's Issues in the U.S. Congress

TIME: 12:30 pm - 6:00 pm

LOCATION: University of Maryland, Shady Grove Campus,
Bldg II, 9630 Gudelsky Drive, Rockville, Maryland

**The Commissions for Women of Montgomery and Prince George's County,
along with our many co-sponsoring organizations,
invite you to join us at the 2012 Women's Legislative Briefing.**

The conference will open with a panel discussion on legislation in the U.S. Senate and House of Representatives, followed by compelling seminars on legislation in the Maryland General Assembly. A reception will conclude the event providing an opportunity to meet with County and State elected officials, advocates and representatives of the most prominent county, state and national women's organizations.

GENERAL ADMISSION \$15
REGISTRATION NOW OPEN!

[Download a Mail-In Registration Form](#)

For more information, please contact the
Montgomery County Commission for Women at 240-777-8333.

www.montgomerycountymd.gov/cfw

Premier Sponsor:
KAISER PERMANENTE® thrive



Major Sponsor:
AARP®

Public Policy Update

Kay Wendowski

Public Policy Co-Vice President

There are three important programs in the year that we have a national convention in Washington. Many of you participated in the first one during the most recent convention, when you joined the Big Teal Machine and went to Capitol Hill to petition senators and congress(wo)men to support our concerns: Save Social Security and Medicare; Put Harriet Tubman in Statutory Hall; Support a Women's Heritage Museum; and The Campus Save Act. The rest of the time we have regular representation at congress through our Lobby Corps, which is made up of many members from Maryland and our neighboring states.

Meanwhile, AAUW headquarters is constantly following the federal scene, working closely with our Lobby Corps, and churning out reports too numerous for me to keep up with, try as I do. I hope some of you are getting this information as well, and disseminating it to your branches.

AAUW also lets me know about news and events at headquarters. The most recent of which are: Linda Hallman, our executive director, spoke to the U.S. Senate Steering and Outreach Committee in October to highlight AAUW's work in promoting jobs for women. She presented the committee chair, Sen. Mark Begich (D-AK), with AAUW's report, *The Simple Truth about the Gender Pay Gap*; next, AAUW released its new report on sexual harassment, *Crossing the Line: Sexual Harassment at School*. It presents comprehensive data on the prevalence of sexual harassment in grades 7-12 and its effects on students' education. Download the report from the AAUW web site or order print copies from ShopAAUW; and last, was a THANK YOU from AAUW for the thousands of e-mails to the Senate urging prompt consideration of judicial appointments. The Senate confirmed 16 federal judges in October, but it is still not enough. So keep those e-mails going to your senators demanding an end to the judicial crises throughout the country.

The rest of the year we work at a state level in coalition with two different groups. The first is

MLAW (Maryland Legislative Agenda for Women). This group is an independent, non-partisan coalition of women's organizations and individuals. A conference was held by them, as it is every year, in late October. I was disappointed that not more AAUW Maryland members were present. By my count there were only four of us, two from Baltimore and two from Easton, Pat Crane and I. The purposes of this conference are:

- To provide a voice for women, women's organizations, advocacy groups and legislators.
- To learn about legislative proposals addressing issues of concern to women and their families.
- To provide for dialogue among participants around emerging issues and concerns.

I sent each branch, I hope, a copy of the MLAW brochure, and I ask that you join it and have your branch and/or individuals listed as supporters in the final brochure. I have asked the state to also join. This way we can have our collective voice heard. By joining soon, you will receive the ballot to select the four to six priority issues. Those selected will be presented at a Legislative Briefing and Reception to be held in January in Annapolis – possibly January 24.

The second organization is the WLB (Women's Legislative Briefing). I have been working on the committee that is organizing this event. It will be held on January 29, 2012, at the University of Maryland at Shady Grove. I have asked AAUW Maryland, but not the branches, to join this. This conference is held every year while the state legislature is in session. The main problem with the event this year is that it will be held on the same weekend as the state meeting, which is January 28, 2012. I hope some of you can go to both, or your branch can send some members to each event. An announcement of the WLB is in this *Marylander*, and I will be forwarding additional information to the branches.

AAUW Photos



Top: Barbara Fetterhoff and Augustine Pounds at Representative Steny Hoyer's Women's Equity Day luncheon in Clinton on August 25.

Middle: Anne Arundel branch membership meeting attracted a colorful crowd and four new members.

Bottom: Four Gaithersburg branch scholarship recipients spoke at the branch's September meeting: Mia Chen and Zolani Ncube from Montgomery College, and Sandra Ramirez and Whitney Pedigo from the Universities at Shady Grove.



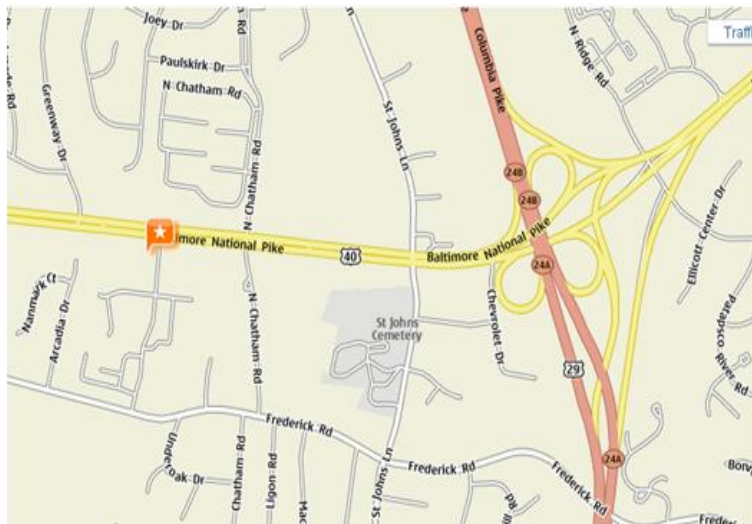
AAUW Maryland Winter Meeting
Saturday January 28, 2012
Shanty Grille (formerly Crab Shanty)
3410 Plum Tree Drive, Ellicott City, Maryland

Directions:

From West (Sykesville, Frederick, Carroll County, etc.): Take I-70 East to Route 40 East. Take Route 40 East through 5 traffic lights and travel for approx. 1 mile. Turn RIGHT onto Plum Tree Drive.

From Washington, D.C.: Take I-95 North to Route 100 West. Follow Route 100 West to Route 29 North. Take Route 29 North to Route 40 West. Take Route 40 West through 2 traffic lights and make first LEFT onto Plum Tree Drive.

From I-695 (Towson, Glen Burnie, Reisterstown, etc.): Take I-695 to Exit 16 which is I-70. Take I-70 West towards Frederick. Follow I-70 for approx 4 miles. Take first exit on the LEFT which is Route 29 South. Take first exit off Route 29 South to Route 40 West. Take Route 40 West through 2 traffic lights and make first LEFT onto Plum Tree Drive.



Conference registration must be received by January 10. Mail registration form and \$37, payable to "AAUW MD" to Jennifer Ingram, 5570 Vantage Point Road, Unit 1, Columbia MD 21044 .



Name: _____ Preferred name on badge: _____

Address: _____

Phone: _____ E-Mail: _____

Branch Name/Position: _____

Special Request-Facility/Other: _____

Please select an entrée:

Garlic Shrimp & Petite Crab Cake _____ Grilled London Broil _____ Lemon Pepper Salmon _____



THE MARYLANDER
AAUW MD
11224 TROY RD.
ROCKVILLE, MD 20852-
2438

Non-Profit Org.
U.S. Postage
PAID
Hagerstown, MD
Permit No. 425

Moving?

Send **ALL** address changes to
AAUW Records Office
1111 16th Street, NW
Washington, DC 20036-4873

CALENDAR

AAUW Maryland Winter Conference

January 28, 2012

Hosted by Howard County Branch

Deadline for the Spring issue of *The Marylander*

Tuesday, February 21, 2012

AAUW Maryland Annual Convention

Weekend of April 28-29, 2012

Details to be Announced

CONTENTS

- | | |
|----|---|
| 1 | AAUW Maryland Winter Conference |
| 2 | Conference Speaker |
| 2 | AAUW MD Counterparts Directory Available |
| 3 | Co-Presidents' Message |
| 4 | AAUW Funds Update |
| 4 | Patuxent River Branch Fundraiser |
| 5 | Membership Issues |
| 5 | College/University Relations |
| 6 | LAF Update |
| 6 | Read <i>Crossing the Line</i> |
| 7 | Sonia Kovalevsky Math Day |
| 7 | E-Mail or Snail-Mail |
| 8 | Save the Date: Women's Legislative Briefing |
| 9 | Public Policy Update |
| 10 | AAUW Photos |
| 11 | Winter Conference Directions and
Registration Form |